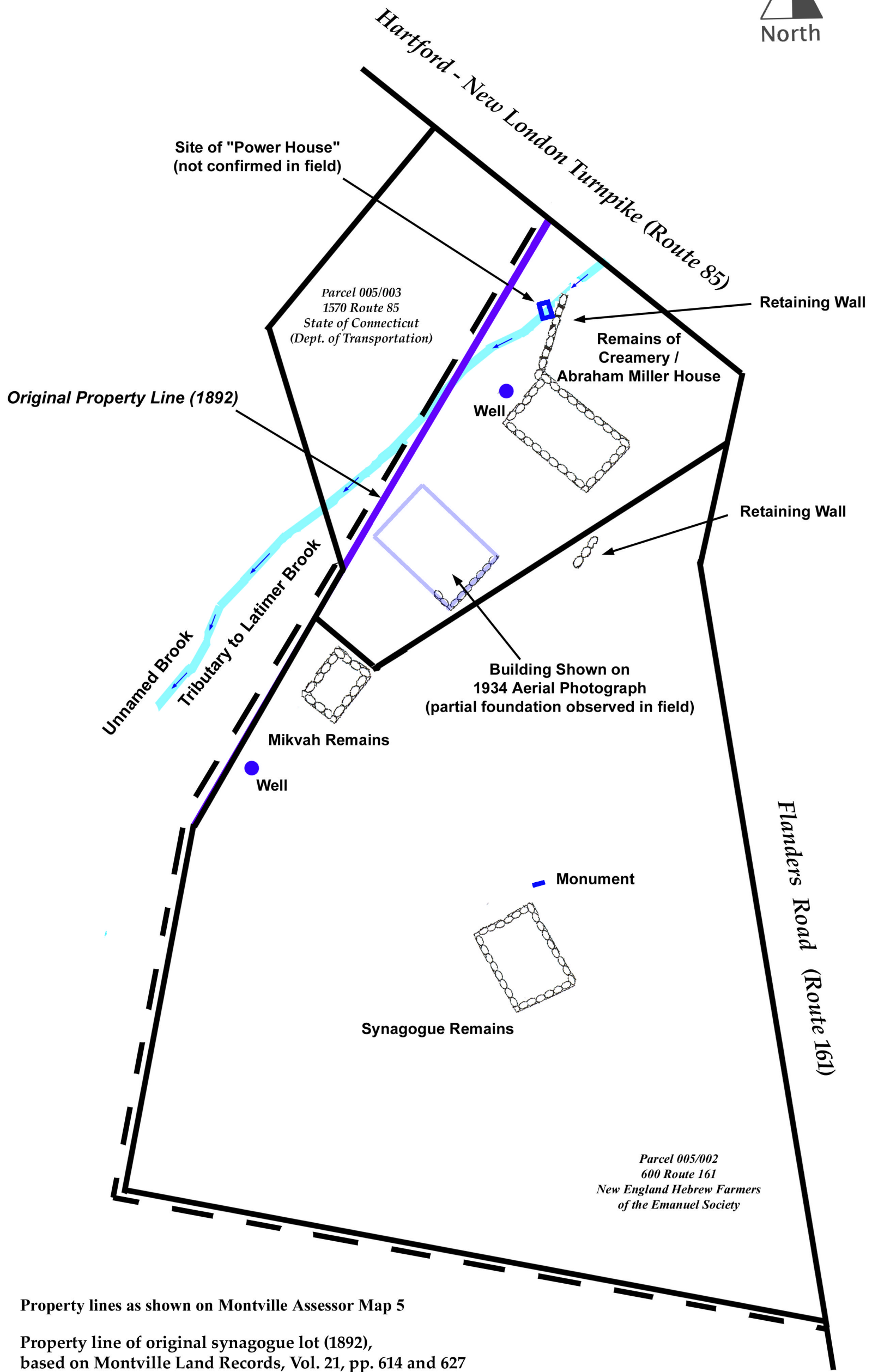


**New England Hebrew Farmers of the Emanuel Society  
Synagogue and Creamery Site  
(Site No. 86-16)**

Chesterfield (Montville), Connecticut



- Property lines as shown on Montville Assessor Map 5
- Property line of original synagogue lot (1892), based on Montville Land Records, Vol. 21, pp. 614 and 627
- - -** Boundary of proposed State Archaeological Preserve

